

# 9 nine needles BY AMAN ARTS Karandi Bamber Dupatta Vol:11



D-no:001



Machine Wash:  
Delicate  
Below 30°C



Hand Wash:  
Below 30°C



Do Not  
Bleach



Do Not Wring



Line Dry  
in Shade



Tumble Dry  
Low Temp:  
Below 40°C



Ironing:  
Below 100°C



# 9 nine needles BY AMAN ARTS Karandi Bamber Dupatta Vol:11



D-no:002



Machine Wash:  
Delicate  
Below 30°C



Hand Wash:  
Below 30°C



Do Not  
Bleach



Do Not Wring



Line Dry  
in Shade



Tumble Dry  
Low Temp:  
Below 40°C



Ironing:  
Below 100°C

# 9 nine needles BY AMAN ARTS Karandi Bamber Dupatta Vol:11



D-no:003



Machine Wash:  
Delicate  
Below 30°C



Hand Wash:  
Below 30°C



Do Not  
Bleach



Do Not Wring



Line Dry  
in Shade



Tumble Dry  
Low Temp:  
Below 40°C



Ironing:  
Below 100°C

# 9 nine needles BY AMAN ARTS Karandi Bamber Dupatta Vol:11



D-no:004



Machine Wash:  
Delicate  
Below 30°C



Hand Wash:  
Below 30°C



Do Not  
Bleach



Do Not Wring



Line Dry  
in Shade



Tumble Dry  
Low Temp:  
Below 40°C



Ironing:  
Below 100°C



# 9 nine needles BY AMAN ARTS Karandi Bamber Dupatta Vol:11



D-no:005



Machine Wash:  
Delicate  
Below 30°C



Hand Wash:  
Below 30°C



Do Not  
Bleach



Do Not Wring



Line Dry  
in Shade



Tumble Dry  
Low Temp:  
Below 40°C



Ironing:  
Below 100°C



# 9 nine needles BY AMAN ARTS Karandi Bamber Dupatta Vol:11



D-no:006



Machine Wash:  
Delicate  
Below 30°C



Hand Wash:  
Below 30°C



Do Not  
Bleach



Do Not Wring



Line Dry  
in Shade



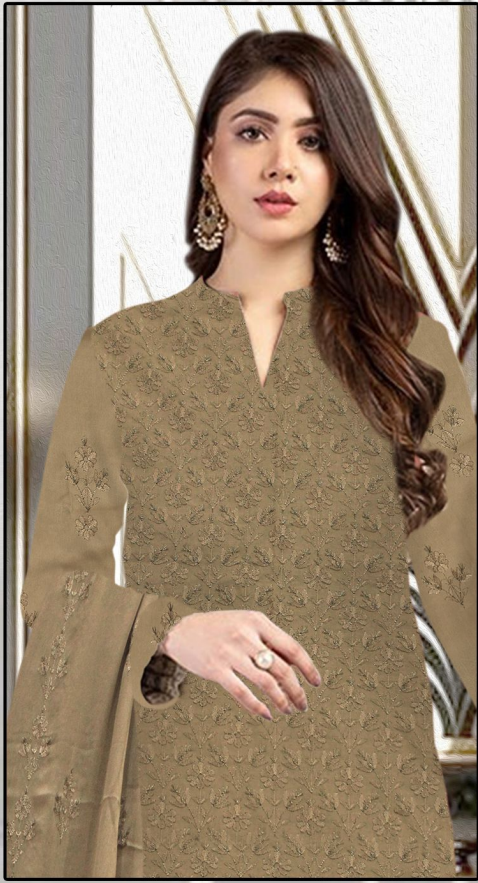
Tumble Dry  
Low Temp:  
Below 40°C



Ironing:  
Below 100°C



# 9 nine needles BY AMAN ARTS Karandi Bamber Dupatta Vol:11



D-no:007



Machine Wash:  
Delicate  
Below 30°C



Hand Wash:  
Below 30°C



Do Not  
Bleach



Do Not Wring



Line Dry  
in Shade



Tumble Dry  
Low Temp:  
Below 40°C



Ironing:  
Below 100°C



# 9 nine needles BY AMAN ARTS Karandi Bamber Dupatta Vol:11



D-no:008



Machine Wash:  
Delicate  
Below 30°C



Hand Wash:  
Below 30°C



Do Not  
Bleach



Do Not Wring



Line Dry  
in Shade



Tumble Dry  
Low Temp:  
Below 40°C



Ironing:  
Below 100°C



# 9 nine needles BY AMAN ARTS Karandi Bamber Dupatta Vol:11



D-no:009



Machine Wash:  
Delicate  
Below 30°C



Hand Wash:  
Below 30°C



Do Not  
Bleach



Do Not Wring



Line Dry  
in Shade



Tumble Dry  
Low Temp:  
Below 40°C



Ironing:  
Below 100°C

# 9 nine needles BY AMAN ARTS Karandi Bamber Dupatta Vol:11



D-no:0010



Machine Wash:  
Delicate  
Below 30°C



Hand Wash:  
Below 30°C



Do Not  
Bleach



Do Not Wring



Line Dry  
in Shade



Tumble Dry  
Low Temp:  
Below 40°C



Ironing:  
Below 100°C

